

*The University of Tennessee*  
*At Martin*



**FOOTBALL  
INFORMATION  
1961**



# U-T MARTIN'S

## 1961 FOOTBALL SCHEDULE

DATE	OPPONENT	SITE
SEPT. 23	<b>Ark. State Teachers</b> (8:00 P.M.)	MARTIN
SEPT. 30	* <b>Austin Peay State</b> (8:00 P.M.)	CLARKSVILLE
OCT. 7	<b>Mo. School of Mines</b> (8:00 P.M.)	MARTIN
OCT. 14	<b>Murray State</b> (8:00 P.M.)	MURRAY, KY.
OCT. 21	<b>Livingston State</b> (2:00 P.M.)	MARTIN
OCT. 28	<b>Delta State</b> (8:00 P.M.)	CLEVELAND, MISS.
NOV. 4	* <b>Carson-Newman</b> (8:00 P.M.)	JEFFERSON CITY
NOV. 11	<b>Troy State</b> (8:00 P.M.)	TROY, ALA.
NOV. 18	<b>Florence State</b> (2:00 P.M.)	MARTIN

\*Conference games

HOMECOMING — LIVINGSTON STATE

## THE UNIVERSITY OF TENNESSEE

### MARTIN BRANCH

# 1961

## FOOTBALL INFORMATION

Edited By

RONALD GILL

### CONTENTS

HISTORY .....	2
DEAN .....	3
ATHLETIC DIRECTOR .....	4
HEAD FOOTBALL COACH .....	5
ASSISTANT COACHES .....	6
ATHLETIC PUBLICITY .....	7
FOOTBALL MANAGERS .....	7
SQUAD ANALYSIS .....	8
PLAYER PROFILES .....	9-23
OPPONENTS .....	24-26
ROSTER .....	27
1960 RESULTS .....	28
DEPTH CHART .....	28
BASKETBALL SCHEDULE .....	Inside Back Cover

# History

THE UNIVERSITY OF TENNESSEE, MARTIN BRANCH, is located in the northwestern part of the state. It is situated about halfway between historic, earthquake-formed Reelfoot Lake and Kentucky-Tennessee Lake, the latter being one of the largest man-made bodies of water in the United States. It is located in an excellent area for boating, fishing, hunting and picnicking.

The main campus includes 75 acres of beautifully wooded land on state highway 22 in the western limits of Martin, a city of 5,000 population. Buildings on the main campus are arranged on an open quadrangle with paved drives located outside the campus proper so that vehicles do not disturb pedestrian traffic. The demonstration farm adjacent to the main campus contains 453 acres.

The roots of UTMB go back to the founding by a group of Baptists of Hall-Moody College in 1900. When Hall-Moody was amalgamated with Union University, Weakley County and the City of Martin floated \$100,000 worth of bonds to purchase the property, and in February of 1927 a bill was passed in the state legislature creating a state junior college to be operated by The University of Tennessee. In 1946 Look Magazine rated U-T Junior College among the fourteen best in the nation.

In 1951, the school was made a senior college by legislative enactment and its name was changed to The University of Tennessee, Martin Branch. At the present time UTMB offers degrees in agriculture, business administration, education, home economics and liberal arts. In addition to these degree programs two years of journalism and two years of basic engineering are offered.

During the past decade new buildings have been erected on the campus. These include a building that houses agriculture, biology and the library; dormitories for men and women; an administration building which also houses education, business administration, modern languages, and a part of home economics; an engineering-physical sciences building soon to be completed and which will house engineering, physics, chemistry, geology and geography. Another building already on the drawing boards and to be begun as soon as the plans are completed is one to house physical education. Additional housing facilities for both men and women are projected for 1963. A library building and a building to house education will probably be among the next major structures to be built.

## Dr. Paul Meek.

### DEAN AND ADMINISTRATIVE HEAD

Dr. Paul Meek, dean of The University of Tennessee, has been head of the Martin Branch since 1934. From its beginning in 1927 the institution has had only one other chief administrative officer.

Dean Meek is a native of Weakley County and served as superintendent of Harlan, Ky., city schools before becoming head of UTMB. He did both his graduate and undergraduate work at The University of Tennessee at Knoxville.



DR. PAUL MEEK

He has served as president of the Tennessee College Association and is a member of the Tennessee Education Association and National Education Association. Dean Meek is also a member of the Martin Rotary Club, of the Weakley County Chamber of Commerce and is Chaplain of the local post of the American Legion.

For a number of years he has been an active member and a lay leader in his church. At the present time he is a member of the Board of Education of the Memphis Conference of the Methodist Church. Lambuth College, in recognition of his outstanding work as a religious leader and educator, awarded Dean Meek the honorary degree of Doctor of Laws in 1959.

During his tenure of office as administrative head, Dean Meek has seen the annual enrollment of UTMB grow from less than 100 to more than 1,300. By 1965, the enrollment is expected to reach 1,600, and by 1970 it is charted to climb to 2,000. At the present time, the institution ranks about seventh in the state in the number of first-time freshmen enrolled each fall quarter. This number is expected to reach 600 in the fall of 1961.

Dean Meek has always been an enthusiastic booster of athletics at UTMB and is an active fan in all of the major sports.





**J. C. HENSON**

## **J. C. Henson**

### **ATHLETIC DIRECTOR**

Now in his 15th year at The University of Tennessee, Martin Branch, J. C. Henson has served as athletic director in the period of the school's rise to a larger and expanded program of inter-collegiate sports. He has been at UTMB since 1946.

A native Mississippian, he earned four letters in football and three in track at Mississippi State. He was a starting tackle on the Maroon team of 1935 that beat Alabama's Rose Bowl team and Army's undefeated team. He captained the track team

in his senior year at Mississippi State.

Henson coached in high schools in Alabama and Mississippi and for a short time coached at Mississippi Junior College before coming to U-T Martin. In 1946, he was made assistant to coach Paul Hug. The next year he took the reins as head football coach, a position he held nine years. He was basketball coach from 1947 until 1952. He assumed the duties of athletic director in 1957 and has held the rank of full professor since September of 1960. In addition to his athletic directorship, Henson serves the University as chairman of health and physical education in the education department and as men's tennis coach.

Henson received the bachelor of science degree at Mississippi State and later the master of science degree in education there. He also holds the master of arts degree in health and physical education from Alabama.

Increasing enrollment has led to degree expansions in the Department of Education with an endorsement in health and physical education. Crowded facilities of the old gym, expanded course offerings and an increasing number of students to be served by the department emphasize the need for new facilities. At the present time plans call for a modern gymnasium to be built on a site west of the campus where 25 acres have been set aside for athletic purposes. UTMB looks forward to a new gym and a possible new stadium which are necessary for future contests with larger schools.

In July, UTMB became a member in the college division of the NCAA (National Collegiate Athletic Association).

## **Robert Carroll**

### **HEAD COACH**

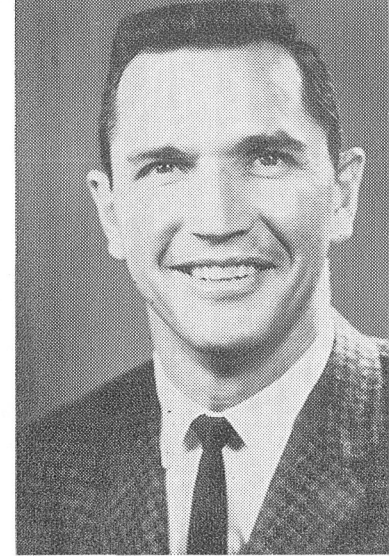
Robert Carroll is beginning his fifth year as head football coach at The University of Tennessee, Martin Branch. His teams have compiled the impressive over-all record of 24 wins, 8 losses and one tie. Other achievements include winning a conference title and placing four players on Little All-America teams.

During his playing days Carroll was an outstanding backfield man both at UTMB and at Wyoming. His first two years of football at UTMB are reflected in the success of the teams on which he played. He was considered one of the shiftiest runners in UTMB Vol history. Carroll transferred to Wyoming for his junior and senior years and played under Phil Dickens, former University of Tennessee star and now head coach at Indiana University. He was a member of the 1956 team that defeated Texas Tech in the Sun Bowl.

Carroll's football playing did not interfere with his studies. In 1954 he was named to the Academic All-America team. Carroll graduated from Wyoming in 1956 with honors. He was a member of Psi Chi, national honorary psychology fraternity. He served in the Marine Corps during 1951 and 1952 and was discharged with the rank of sergeant. He is a native of Milan, Tennessee.

This year the 29-year-old Carroll will begin the season with several outstanding members of his 1960 squad. These men distinguished themselves under fire as sophomores and juniors last season. Carroll believes in hard-nose football and demands absolute devotion to duty from his players. Strict attention is paid to their academic progress. He prefers a high-scoring ball club both on the field as well as in the books. In 1960 the UTMB Vols averaged approximately 30 points per game.

Carroll is an instructor in history and his knowledge is quite evident in the classroom, according to his students. At Wyoming he received an award for outstanding achievement in history. Carroll's talents are attested to by the fact that he has never been associated with a losing team. He is well qualified for his work both by his experience and his keen understanding of men and the game.



**ROBERT CARROLL**





GROVER PAGE



ROSS ELDER

## GROVER PAGE, LINE COACH

This season marks Grover Page's third campaign as a member of the U-T Martin coach staff. He joined his two former teammates of Wyoming in the summer of 1959. He was an outstanding center on the Wyoming team that defeated Texas Tech in the Sun Bowl in 1957.

Page attended Georgia Military College before transferring to Wyoming and he was named to the Junior College All-America team. After graduation from Wyoming in 1957 he served in the Army as second lieutenant.

Page coached prep football and basketball at Aiken, S. C., High School before coming to UTMB. Along with his present duties as line coach, he is an instructor in health and physical education.

## ROSS ELDER, END COACH

Ross Elder is right at home coaching the U-T Martin ends. A teammate of head coach Robert Carroll at Wyoming, Elder enrolled there in 1953 and played on the team four years. A muscular 205 pounder, Elder starts his third year as end coach.

He capped a successful collegiate career by receiving honorable mention All-America in 1956. He was a unanimous choice for All-Skyline Conference end his senior year, and he played in the Blue-Gray game at Montgomery, Ala., in 1956.

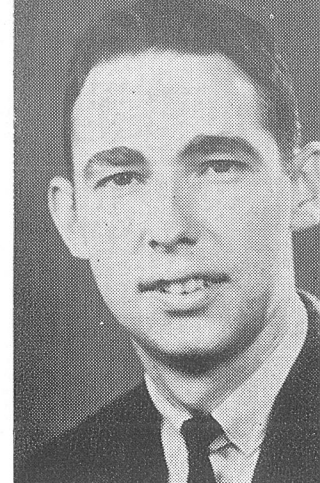
Following graduation he coached at Worland, Wyoming, High School. He then went to Indiana University to work on the master's degree, and there he assisted his former coach, Phil Dickens, who had transferred from Wyoming.

## RONALD GILL ATHLETIC PUBLICITY

Beginning his second year as sports information officer, Ronald Gill handles the job of drumbeater for the UTMB Vols.

A junior in business administration, he works daily getting out news releases, photos, statistics, schedules, scripts, brochures, histories, posters and programs. Gill reports to both the wire services and the newspapers. He also conducts the daily radio program, "UTMB Sports Parade," over the local station.

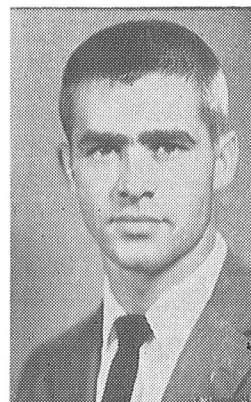
In addition to his job of reporting sports news, Gill serves as sports editor of UTMB's official student newspaper, The Volette. In both capacities he works in close cooperation with the public relations office.



RONALD GILL

## CURTIS SHELTON Equipment Manager

Curtis Shelton assumes the duties of team manager this year. He moves up from the assistant's spot which he capably filled last year. He is responsible for the upkeep of equipment and the daily assignment of uniforms. He is a junior in education.



SHELTON

## JEFF BRANHAM Trainer

A most valuable member of the staff is Trainer Jeff Branham. He will administer to physical needs of players, the all important job that involves continuous efforts to prevent injuries and treatment once sustained.

Branham has lettered three years in baseball.



BRANHAM

## GEORGE INGLE Statistician

Ingle will serve as the official statistician for 1961. He is a new man on the football staff but is not a newcomer to sports having served as basketball statistician. He will assist Ronald Gill with the announcing job on some of the daily radio programs.



INGLE

# 1961 Squad Analysis

## LETTERMEN LOST (4)

ENDS: Mickey Norman, Bob Wronko

CENTER: Harris Pritchett

FULLBACK: Wayne Forehand

## LETTERMEN RETURNING (23)

ENDS: Jim Love, Wally Bielewicz, Dave Dickson

TACKLES: Ralph Rutland, Frank McCann, Romeo Duncan, Sonny Pitts

GUARDS: John Blair, Ray Newbill, Sonny Gilbert, Butch Dean, J. D. Wyrosdick

CENTERS: Jay Kessler, Vernon Hoyle

QUARTERBACKS: Vernon Prather, Ted Sines

HALFBACKS: Gene Brodie, Wilbur Edmiston, Bob Zachary, Bill O'Connor, Gene Treadway

FULLBACKS: Darrel Smith, Carroll Hughes

## NON-LETTERMEN RETURNING (8)

ENDS: Billy Whitfield

TACKLES: Tom McNutt, Merrell Davis

CENTER: Gob Cartrett

QUARTERBACKS: Don Edwards, Billy Watson

HALFBACKS: Roy Wheeler, Bob Melton

## JUNIOR COLLEGE, PREP SCHOOL, AND OTHER TRANSFERS (7)

ENDS: Phil Onkotz, Bill Johnson

TACKLES: Billy Poindexter

GUARD: Jim Nunley, G. W. Field

QUARTERBACK: Charles Rozycki

FULLBACK: Tom Pearce

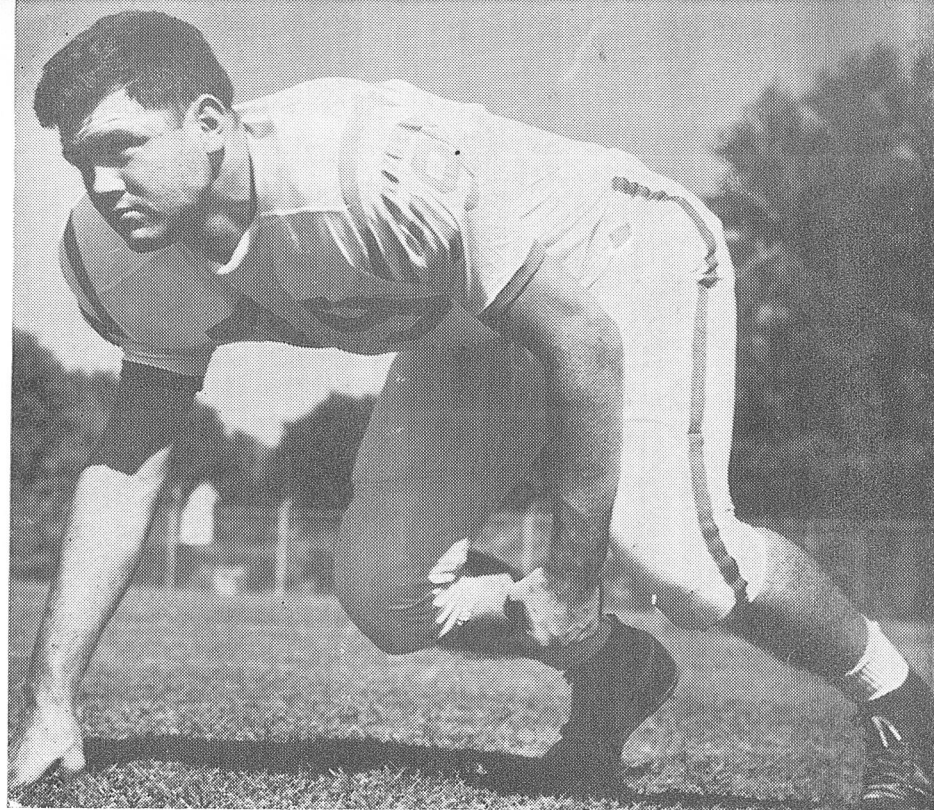
KICKOFFS: Bob Zachary, Phil Onkotz, John Blair

PUNTERS: Gene Brodie, Billy Watson

EXTRA POINTS: Bob Zachary, Phil Onkotz, John Blair, Vernon Prather

PASSERS: Vernon Prather, Ted Sines, Billy Watson, Don Edwards, Charles Rozycki

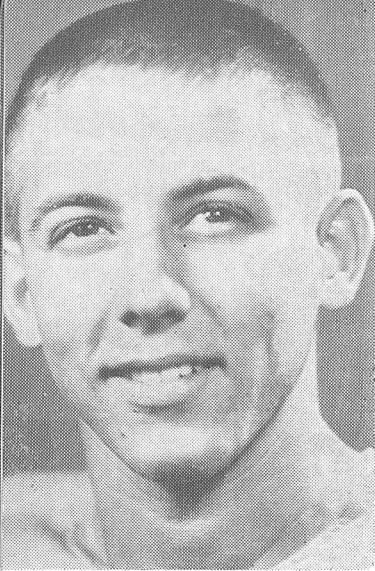
(Due to early publication date incoming freshmen are not listed.)



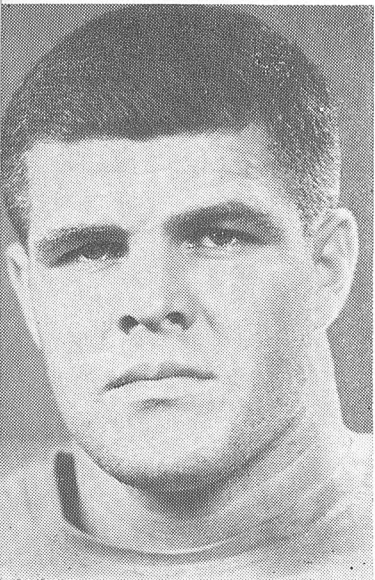
**RALPH RUTLAND**  
CO-CAPTAIN

## Player Profiles

**RALPH RUTLAND** — co-captain for 1961 . . . senior tackle from Cherokee, Ala. . . weighs 215 . . . Liberal Arts major . . . a starter for the past 3 seasons . . . A devastating blocker and vicious tackler. Played tremendous ball for UTMB last season. Named to the second team Little All-America in the Williamson Rating System. Is big, strong and fast with valuable game experience. Will be a work-horse in the Vol line this year. Plans a Marine Corps officer future.



**TED SINES** — quarterback from Knoxville, Tenn. . . . junior in secondary education . . . weighs 160 . . . letters earned, 1 . . . a singularly tough competitor. Has good running power and has improved his passing. Is a hard knocker on defense. Performance was outstanding in this spring's intrasquad game. Gained 62 yards passing and 32 yards rushing against Troy State last November. Prepped at Bearden High School.



**GENE BRODIE** — halfback from Wagener, S. C. . . . lettered as a freshman . . . weighs 192 . . . PE major . . . Deceptive and hard to catch in the open. Good tackler and excellent pass defender. Performed punting duties all season. Caught 3 TD passes good for 111 yards last fall. His overall average was 32 yards per catch. Will see lots of action with the Vols this season.

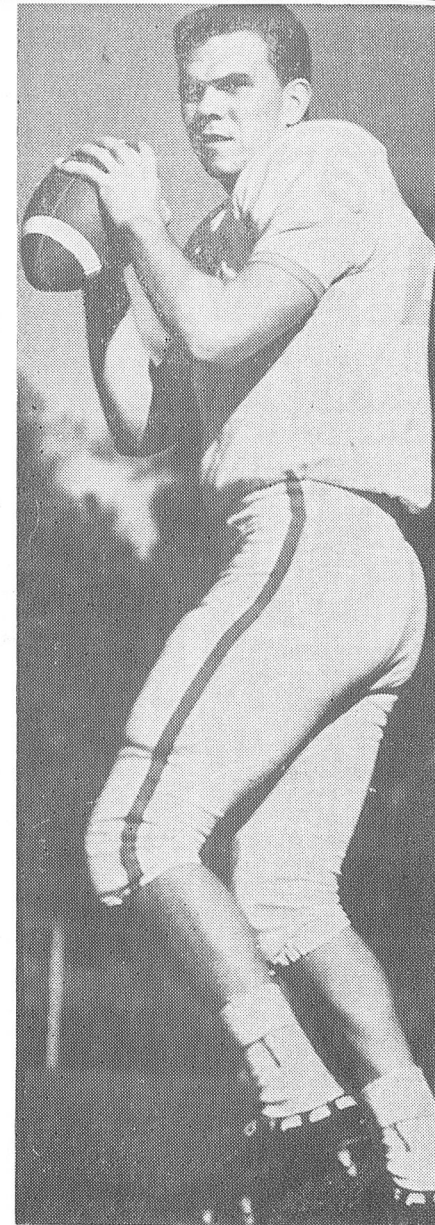
TOP—TED SINES  
BOTTOM—GENE BRODIE

**VERNON PRATHER** — quarterback from North Augusta, S. C. . . . junior in physical education . . . weighs 185 . . . letters earned, 1 . . . Alternated with Ted Sines at quarterback position last season. Led the team in passing with 597 yards. Scored 3 TD's rushing. Expected to see plenty of action this season. Has fine all around ability. A consistent and steady performer.

**TOM PEARCE** — fullback from Jackson, Tenn. . . . business major . . . weighs 181 . . . Shows promise on offense and defense. Has determination and with college ball experience should see action with the Vols. Lettered 3 years in prep ball at North Side High School and played at Columbia Military Academy.

**BILL JOHNSON** — end from Cleveland, Ohio . . . 6'3" . . . weighs 205 . . . PE major . . . needs experience . . . good speed with future possibilities . . . placed second in conference track meet in the 220.

**G. W. FIELD** — freshman guard from Centerville . . . majoring in physical education . . . weighs 195 . . . with experience and hard work he could be a good prospect.



VERNON PRATHER





WILBUR EDMISTON

**WILBUR EDMISTON**—halfback from Millington, Tenn. . . . junior in education . . . weighs 175 . . . letters earned, 1 . . . a gifted runner and a scoring threat from all over the field. Led the state collegiate scoring race for five weeks and became the number one scorer in Tennessee's colleges and universities last season. Scored 11 touchdowns. Led the team in yards gained rushing with 480 averaging 6.6 per carry. Named to the all-conference team. Longest run was against Missouri School of Mines for 68 yards.

**MERRELL DAVIS** — tackle from Fulton, Ky. . . . sophomore in education . . . weighs 224 . . . letters earned, 0 . . . Saw limited action as a freshman last fall. Could help with experience and hard work. Named honorable mention all-state in high school.

**BILLY POINDEXTER** — tackle from Milan, Tenn. . . . sophomore in business administration . . . weighs 210 . . . letters earned, 0 . . . A transfer with good speed who should develop in a good player and see plenty of action this fall. Looked good in spring training.

**BOB ZACHARY** — halfback from Cleveland, Ohio . . . junior in physical education . . . weighs 187 . . . letters earned, 2 . . . a good runner and defensive back. A sprinter on the track team. Will be counted on heavily in 1961 as a consistent ground gainer. Averaged 5.7 yards per carry. Longest run last season was 60 yards against Arkansas State Teachers. Does extra point and kickoff duties. Fastest man on the squad.

**BOB CARTRETT** — center from Augusta, Ga. . . . junior in physical education . . . weighs 190 . . . letters earned, 0 . . . Saw limited action last fall and was hampered by injuries during spring training. Expected to see considerable action again this year in the Vol line.

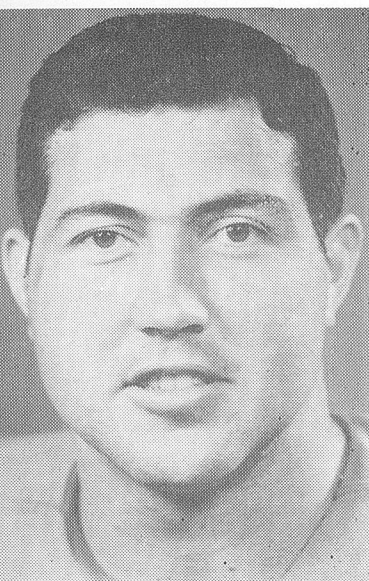
**BILLY WATSON** — quarterback from Johnston, S. C. . . . sophomore in education . . . weighs 167 . . . letters earned, 0 . . . Shared punting duties while working at the quarterback spot last season. Should see more action this year with the added experience. Came on steadily in spring practice and considered a fine performer.



BOB ZACHARY



**GENE TREADWAY** — halfback from Cincinnati, Ohio . . . junior in physical education . . . weighs 165 . . . letters earned, 2 . . . Performed well last season until injured in the Delta State game. A tough competitor who excels on defense. Played high school ball at Central in Knoxville, Tenn.



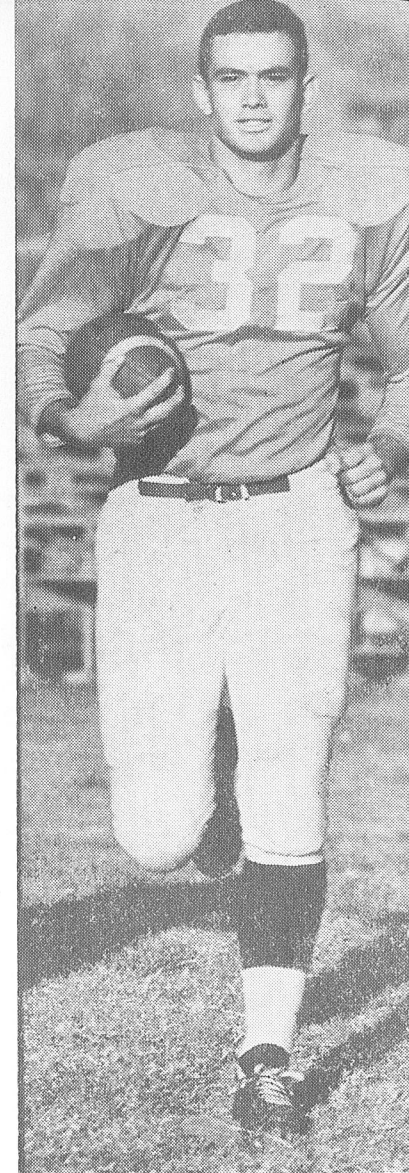
**CARROLL HUGHES** — fullback from Ware Shoals, S. C. . . . sophomore in physical education . . . weighs 217 . . . letters earned, 1 . . . A hard driving, powerful fullback who lettered as a freshman. Big and strong enough to play the position well. Will see lots of action this year with that valuable experience tucked away from his freshman year. Throws the shot on the track team. He and Smith are waging a terrific battle for the starting berth.

TOP—GENE TREADWAY  
BOTTOM—CARROLL HUGHES

**DARRELL SMITH** — co-captain of the 1961 Vols . . . fullback from Munford, Tenn. . . . junior in liberal arts . . . weighs 190 . . . letters earned, 2 . . . Started in every game last season. Scored 7 touchdowns last fall. Gained 582 yards. A bull-like runner with strength, speed and stamina to get that extra yard. Placed on the all-conference team. A seasoned line backer with enough ability to play anywhere in the backfield. Plans a Marine Corps officer future.

**DON EDWARDS** — sophomore from Brownsville, Tenn. . . . quarterback . . . LA major . . . weighs 155 . . . letters earned, 0 . . . Needs that valuable game experience in college ball. He is quick and passes well. He will see action with the Vols in the future.

**CHARLES ROZYCKI** — quarterback from Chicago, Ill. . . . weighs 182 . . . Considered a good prospect. Had a good spring training. Throws a long pass. Should see action in the future. Earned 3 letters at Lakeview High School.



DARRELL SMITH  
CO-CAPTAIN



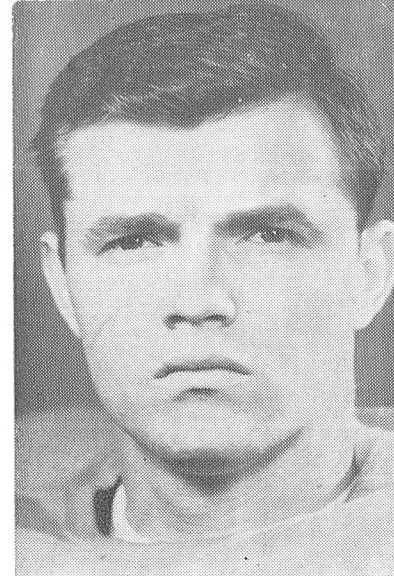
**DAVE DICKISON** — end from Dayton, Ohio . . . junior majoring in secondary education . . . weighs 195 . . . letters earned, 1 . . . Injuries forced him to the bench early in the season last year but he has enough of that valuable game experience which will enable him to move into the picture at end. Has good speed and reactions.



**WALLY BIELEWICZ** — end from Hobart, Ind. . . . junior majoring in business administration . . . weighs 175 . . . letters earned, 2 . . . Will be a tough man to move out of the number one spot at end. Plays good defensive ball and is capable on offense, too. An all-stater in high school . . . Has good speed and hits quick and hard.

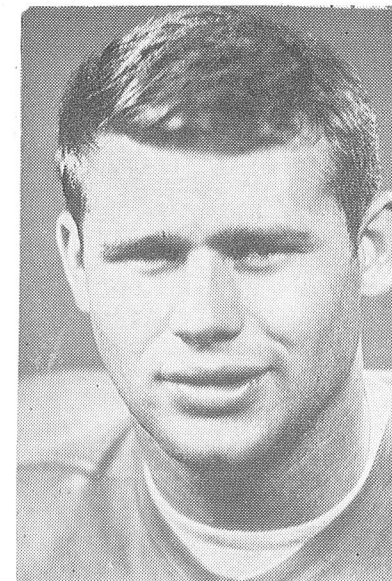
TOP—DAVE DICKISON  
BOTTOM—WALLY BIELEWICZ

**JIM LOVE** — a two year letterman . . . end from South Bend, Ind. . . . all-state in high school . . . junior in physical education . . . weighs 205 . . . a fine defensive man with capabilities on offense as well. Experience and alertness will contribute much to the team. Has the know-how to become one of the finest ends in the conference this year. A high jumper on the track team.



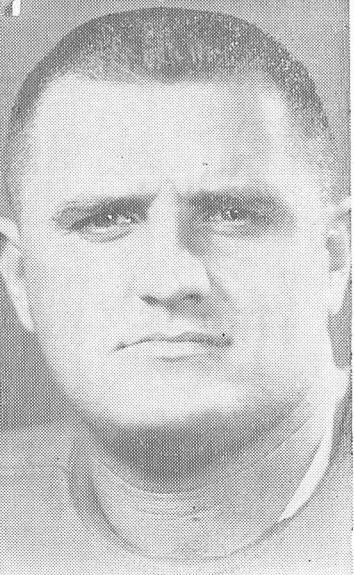
**ROMEO DUNCAN**—left tackle from Knoxville, Tenn. . . . 6-1, weighs 195 . . . 2 letters . . . has good speed. Aggressive blocker and tackler . . . a hard worker who played with injuries last year . . . he is expected to make a strong bid for a starting berth. Prepped at Bearden High School.

**JIM NUNLEY** — guard from Harts-ville, Tenn. . . . sophomore in physical education . . . weighs 202 . . . transfer . . . Has good speed and reactions. His work on defense looked good in spring practice. Should see some action this fall. Lettered 4 years in high school.

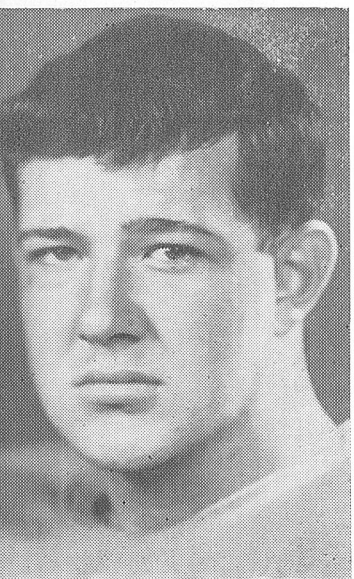


TOP—JIM LOVE  
BOTTOM—ROMEO DUNCAN





**FRANK McCANN** — senior tackle from Phoenixville, Pa. . . . majoring in physical education . . . weighs 235 . . . lettered 2 years . . . big, tough and determined ball player. Hard to move on defense. His experience will be a big asset to the team. A probable starter. Named to the all-Catholic national team in high school.



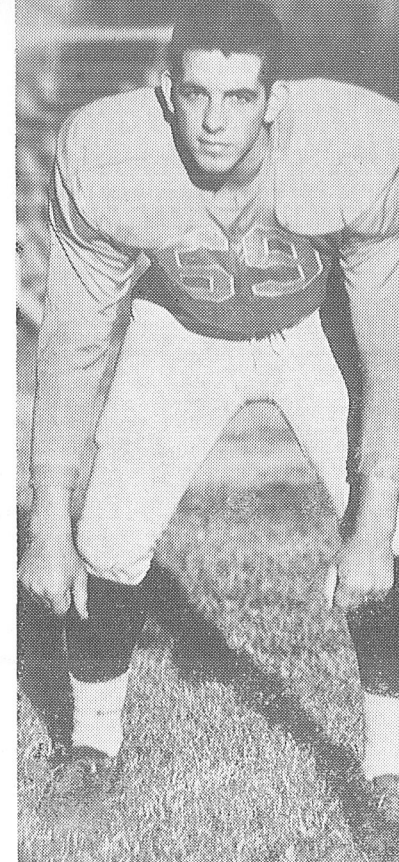
**CHARLES (SONNY) PITTS** — lettered as a freshman . . . tackle from Ware Shoals, S. C. . . . weighs 230 . . . one of the biggest men on the team, saw considerable action as a freshman and will be counted on heavily in the line this year. Hits and tackles hard. Could be a top man at the tackle position. An all-stater in high school and was an all-Southern basketball player.

TOP—FRANK McCANN  
BOTTOM—SONNY PITTS

**JOHN BLAIR** — guard from Nashville, Tenn. . . . senior in business administration . . . weighs 205 . . . letters earned, 2 . . . a starting guard last season . . . a tough competitor and fine all-around performer. Hard to move on defense and effective blocker on offense. Should have another good year. Prepped at Madison High.

**ROY WHEELER** — halfback from Greenfield, Tenn. . . . sophomore in education . . . weighs 175 . . . letters earned, 0 . . . Could develop into a fine halfback and see plenty of action this year. He moves well and has good action. Performs best on the offense. More experience will help in becoming a well rounded ball player. Lettered 4 years in high school.

**BOB MELTON** — halfback from McKenzie, Tenn. . . . weighs 170 . . . letters earned, 0 . . . Has fine speed and good balance. Saw limited action as a freshman. Expected much more of this season with more experience. Lettered 4 years in high school.



JOHN BLAIR



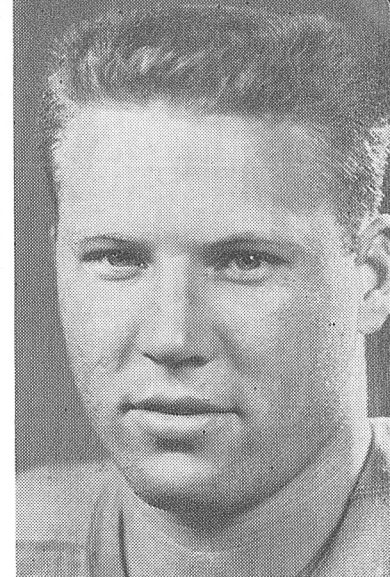
**RAY NEWBILL**

**RAY NEWBILL** — guard from Dyersburg, Tenn. . . . lettered as a freshman . . . education major . . . weighs 205 . . . Saw lots of action as a freshman last fall. One of the hardest workers on the squad. Has good action and good speed. Will be in line for a starting spot. Should have a good year with the experience under his belt.

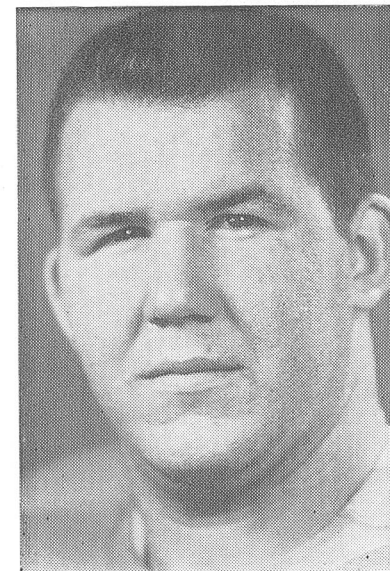
**TOM McNUTT** — tackle from Sheffield, Ala. . . . sophomore in engineering . . . weighs 220 . . . letters earned, 0 . . . A big, rugged lineman who saw limited action as a freshman. Should develop into a top notch tackle by this year. He will be counted on throughout the season. Could give a battle for a starting berth.

**BILL O'CONNOR** — halfback from Wadsworth, Ohio . . . senior in education . . . letters earned, 1 . . . weighs 166 . . . a shifty runner with good speed. A sprinter on the track team. Was outstanding in intrasquad game in April. Will see action this season with the Vols.

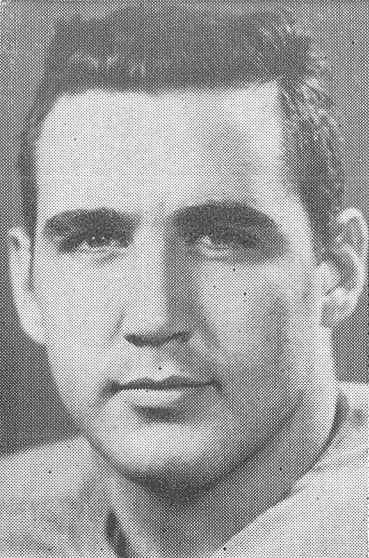
**SOMERS (BUTCH) DEAN** — guard from Opelika, Ala. . . . weighs 198 . . . PE major . . . letters earned, 1 . . . played good ball last season. Is strong and agile. Good blocker. Should see plenty of action this fall and will be a top contender for a starting position. Formerly played at Georgia Military College.



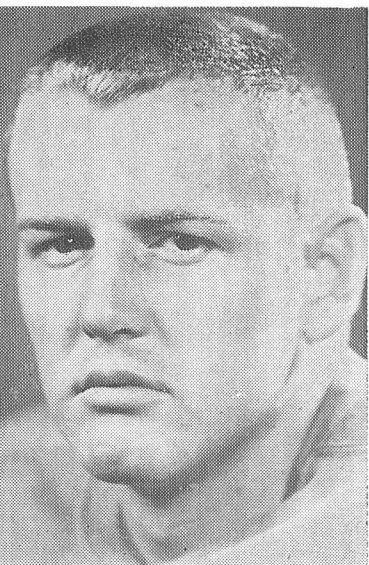
**CARL (SONNY) GILBERT** — guard from Newnan, Ga. . . . sophomore in physical education . . . weighs 197 . . . letters earned, 1 . . . Played outstanding ball last fall and will be counted on heavily this season. A tough, fast player. Is expected to be top contender at his position. Played on tennis team. A prep all-stater.



**TOP—BUTCH DEAN  
BOTTOM—SONNY GILBERT**



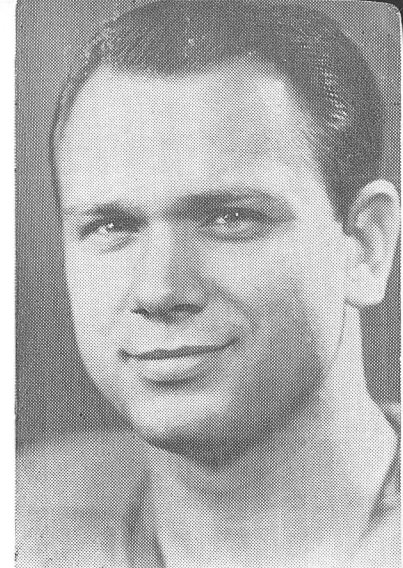
**J. D. WYROSDICK** — guard from Knoxville, Tenn. . . . lettered as a sophomore . . . weighs 196 . . . majoring in business administration . . . Will see more action this year and should prove to be a valuable asset to the Vol line. A hard tackler and good blocker. Played high school ball at Central High.



**VERNON HOYLE** — center from Durham, N. C. . . . 2 letters . . . weighs 207 . . . Liberal Arts major . . . Improved quite a bit last year. Good team man. Strong and husky enough to anchor the line. Will see considerable action this fall. Has experience and alertness to diagnose plays. Earned 4 letters in high school. An all-state end in high school.

TOP—J. D. WYROSDICK  
BOTTOM—VERNON HOYLE

**JAY KESSLER** — center from Troy, Ohio . . . lettered as a freshman . . . PE major . . . weighs 195 . . . Saw considerable action last season and will be counted on heavily for the center spot. Has lots of desire to play and is a top contender for the starting position. A hard worker and a winner. He has the capabilities of becoming an outstanding center.



JAY KESSLER

**BILLY WHITFIELD** — end from Aiken, S. C. . . . sophomore in business administration . . . weighs 185 . . . letters earned, 0 . . . Had a good spring training. Saw limited action as a freshman and was impressive on occasions. Hits hard and is good on defense.

**PHIL ONKOTZ** — end from Kingsport, Tenn. . . . sophomore in physical education . . . weighs 210 . . . Expected to see plenty of action. He's big, strong, and a rugged, bruising blocker. A top contender for the starting position.



# The Opponents

## ARKANSAS STATE TEACHERS

Head Coach Frank Koon's Bears had a good season last year. They were only three points away from a perfect season. Arkansas Tech slipped by them 3 to 0 for the AIC title. Only four teams scored against Arkansas State Teachers last season.

In a driving, fierce storm last October the Bears proved to be too much for UTMB's Vols and won 19-6 at Conway. The Vols are hungry for a victory over the Bears and should give them a hard way to go in 1961.

Coach Koon uses a winged T attack. Losing only five lettermen, prospects look good with 28 lettermen returning. Charles Gates and Dennis Wewers are the 1961 co-captains.

The Bears placed five players on the all-conference team. The NAIA statistical report showed ASTC fourth in team rushing in the nation, 12th in team rushing defense, 14th in team total defense, and 22nd in team total offense.

## AUSTIN PEAY STATE

The Austin Peay - U-T Martin contests date back to 1930 when the Vols took a 32-0 win over the Governors. The colorful gridiron battle was halted for several years but revived again in 1959. UTMB has won the last two arguments on the field, but both games were close and hard-fought.

Head Coach Art Van Tone is in his second year as the Gobs head mentor. Last year's mark at the season's end was two wins and eight losses. They lost the final two games by one point each. Their two wins came against Jacksonville State and Troy State.

## MISSOURI SCHOOL OF MINES

The Miners had a so-so season in 1960 but they are a tough customer and a force to be reckoned with. Their schedule included Southeast Missouri, Pittsburg (Kansas), Southern Illinois, Washington University, Northeast Missouri, Central Missouri, Northwest Missouri, and Southwest Missouri. Last season's record was no wins and nine losses.

Coach Gale Bullman lost 17 lettermen last year. He has 15 returning to the squad. UTMB's 20 to 12 victory last October was not easily come by. This year's battle at Martin should prove to be exciting.

## MURRAY STATE

Murray State appears on the U-T Martin schedule for the first time in 30 years. The Vols at Martin replaced the University of Louisville on the Racers' chart.

If the number of returning lettermen is any sign of MSC's football strength, the 1961 squad may be plenty strong. The Racers of this season enter the arena with 25 lettermen available. They lost only four. Murray is rated as the team to beat in the OVC.

After a couple of average seasons Murray State whipped five opponents last season including Southeast Missouri (21-10), East Tennessee (14-0), Eastern Kentucky (21-19), Western Kentucky (26-7), and Morehead State (14-8). They tied for second place in the tough Ohio Valley Conference. Their record at the season's end stood at five wins and five losses.

Coach Don Selton prefers an unbalanced T formation—5-4-2. He is in his second year at MSC.

This year's contest will be at Murray State's 6,000-seat Carlisle Cutchin Stadium.

## LIVINGSTON STATE

The 1961 Livingston State football team will consist of several returning lettermen plus the addition of some outstanding junior college transfers and freshmen.

Livingston has always played spirited ball against the Vols. The Orangemen barely emerged as 14-12 victors in 1960 in a hard-fought contest.

Livingston, under Coach Jim Garner, uses a pro type offense which features a fine passing attack. The Tigers will be UTMB's 1961 homecoming opponent and the contest should be an outstanding one.

## DELTA STATE

Coach Horace McCool's Statesmen posted a 6-3 record last season. The big boys from the Delta handed UTMB its worst defeat of the 1960 campaign last October, 34 to 8.

The series now stands at 1-2. Delta State has won the last two games. The Orangemen will provide the homecoming opposition at Delta State this year and the game should be a thriller.

Coach McCool's squad lost to Arlington State, Howard, and Louisiana College last year. They won games from Florence State, Arkansas A. & M., Southeast Missouri, UTMB, Northeast Louisiana, and Ouchita.

DSC has a new stadium—Delta Field—which seats 3,500. The Statesmen operate from a modified split T, and will field a veteran team in 1961.

## CARSON NEWMAN

This year's game will be at the Eagles' 4,000-seat McCown Field. They were last season's runner-up in the conference. Their seasonal mark was four wins and five losses. They won games from Austin Peay, Georgetown, Jacksonville State and Maryville. Their losses came at the hands of Western Carolina, Emory and Henry, Appalachian State, UTMB and Newberry.

Coach Harmon's squad operates a wing-T. Sixteen monogram winners return to the 1961 Eagles' nest. They lost 12 from last year's squad. Co-captains Fran Buhler and Dan Carter head this season's aggregation.

This year's schedule lists two newcomers, Howard College and Mississippi College; dropped were Jacksonville State and Georgetown.

## TROY STATE

Forming the backbone of Troy State's 1961 football force are 12 returning lettermen. The Red Waves posted a 1-8 mark last season and ranked last in the Alabama Collegiate Conference. Troy State plays a sensational passing game and are expected to be tougher in 1961. The team was handicapped last year by a lack of depth.

Louisiana College and Florence held Troy State scoreless while Tampa, UTMB, Austin Peay, Jacksonville State, and Howard College defeated them. Troy State's only win was a 27 to 6 decision over Livingston State.

This year's game is at Troy State's 5,000-seat Memorial Stadium.

## FLORENCE STATE

The 1961 Florence State football force will be built around 16 returning monogram winners. The Lions were Alabama Collegiate champs in 1960 with a season record of 7-3.

Last year's UTMB-Florence State contest was one of the season's most exciting. The Vols were within inches of a PAT but lost 21-20 in the final moments of the game at the 7,500 capacity Coffee Stadium at Florence.

Coach Hal Self likes a single wing style and uses it very effectively. They took games from Middle Tennessee, Murray State, Jacksonville State, Troy State, Livingston State, Austin Peay and UTMB last season. They lost to Delta State, Southeast Louisiana, and Arkansas State. Three of their victories came by only one point. Billy Anderson and John Willis are the 1961 co-captains.

## UTMB Vol Roster

Name	Position	Age	Ht.	Wt.	†Class	Hometown
*Wally Bielewicz	End	20	5-11	175	Jr.	Hobart, Ind.
*David Dickison	End	22	6-1	195	Soph.	Dayton, O.
Bill Johnson	End	20	6-3	205	Fr.	Cleveland, O.
*Jim Love	End	20	6-2	208	Jr.	South Bend, Ind.
Phil Onkotz	End	20	6-2	210	Soph.	Kingsport, Tenn.
Billy Whitfield	End	19	5-11	185	Soph.	Aiken, S. C.
*Romeo Duncan	Tackle	21	6-0	195	Jr.	Knoxville, Tenn.
Merrell Davis	Tackle	19	6-2	222	Soph.	Fulton, Ky.
*Frank McCann	Tackle	23	6-1	235	Sr.	Phoenixville, Pa.
Tom McNutt	Tackle		6-0	220	Soph.	Sheffield, Ala.
*Sonny Pitts	Tackle	20	6-4	230	Soph.	Ware Shoals, S. C.
Billy Poindexter	Tackle	20	6-2	210	Soph.	Milan, Tenn.
*Ralph Rutland	Tackle	21	6-3	215	Sr.	Cherokee, Ala.
*John Blair	Guard	21	5-11	205	Sr.	Nashville, Tenn.
*Butch Dean	Guard	20	5-11	198	Soph.	Opelika, Ala.
G. W. Field	Guard	19	5-9	195	Fr.	Centerville, Tenn.
*Sonny Gilbert	Guard	20	6-0	197	Jr.	Newnan, Ga.
*Ray Newbill	Guard	20	6-0	205	Soph.	Dyersburg, Tenn.
Jim Nunley	Guard	20	6-0	202	Soph.	Hartsville, Tenn.
*J. D. Wyrosdick	Guard	20	5-11	196	Jr.	Knoxville, Tenn.
Bob Cartrett	Center	26	5-11	190	Jr.	Augusta, Ga.
*Vernon Hoyle	Center	23	6-1	207	Sr.	Durham, N. C.
*Jay Kessler	Center	19	5-9	195	Soph.	Troy, Ohio
Don Edwards	Quarterback	18	5-9	155	Soph.	Brownsville, Tenn.
*Vernon Prather	Quar'back	24	5-11	185	Jr.	N. Augusta, S. C.
Chas. Rozycki	Quar'back	18	6-0	182	Fr.	Chicago, Ill.
*Ted Sines	Quar'back	20	5-8	158	Jr.	Knoxville, Tenn.
Billy Watson	Quar'back	21	5-11	167	Soph.	Johnston, S. C.
*Gene Brodie	Halfback	19	5-11	193	Soph.	Salley, S. C.
*Wilbur Edmiston	Halfback	22	5-8	175	Jr.	Millington, Tenn.
Bob Melton	Halfback	19	5-11	170	Soph.	McKenzie, Tenn.
*Bill O'Connor	Halfback	22	5-10	166	Sr.	Wadsworth, Ohio
*Gene Treadway	Halfback	22	5-10	165	Jr.	Knoxville, Tenn.
Roy Wheeler	Halfback	20	5-10	171	Soph.	Greenfield, Tenn.
*Bob Zachary	Halfback	22	6-0	187	Jr.	Cleveland, Ohio
*Carroll Hughes	Fullback	22	6-0	217	Soph.	Ware Shoals, S. C.
Tom Pearce	Fullback	19	5-11	181	Fr.	Jackson, Tenn.
*Darrel Smith	Fullback	21	6-0	200	Jr.	Munford, Tenn.

\*—denotes lettermen

†—Class according to eligibility

(Due to early publication incoming freshmen are not listed)

# 1960 Results

UTMB		Oppon.
35	Memphis Navy	0
6	Arkansas State Teachers	19
13	Austin Peay State	7
20	Missouri School of Mines	12
14	Livingston State	12
55	Millsaps	6
8	Delta State	34
26	Carson-Newman	21
21	Troy State	16
20	Florence State	21
Won	Lost	Tied
7	3	0
VSAC 2	0	0
(1960 Conf. Champions)		

## DEPTH CHART

(as it stood at the end of spring practice)

LE	LT	LG	C	RG	RT	RE
Love	McCann	Newbill	Kessler	Gilbert	Rutland	Sielewicz
Whitfield	Duncan	Dean	Cartrett	Blair	Pitts	Onkotz
Johnson	Poindexter	Wyrosdick	Hoyle	Nunley	McNutt	Dickison
			QB			
			Prather			
			Sines			
			Watson			
			Edwards			
			Rozycki			
	LH				RH	
	Brodie				Zachary	
	Edmiston				O'Connor	
	Melton				Wheeler	
			FB			
			Smith			
			Hughes			
			Pearce			

NOTE: The above is not an order of substitution.

U-T MARTIN

1961-1962

## Basketball Schedule

Nov. 30	FREED-HARDEMAN COLLEGE	Here
Dec. 2	ARKANSAS COLLEGE	There
Dec. 7	LAMBUTH COLLEGE	There
Dec. 16	MISSOURI SCHOOL OF MINES	Here
Dec. 30	ARKANSAS COLLEGE	Here
Jan. 4	BETHEL COLLEGE	Here
Jan. 6	FLORENCE STATE COLLEGE	There
Jan. 8	FREED-HARDEMAN COLLEGE	There
Jan. 11	DELTA STATE COLLEGE	Here
Jan. 13	BELMONT COLLEGE	Here
Jan. 15	BETHEL COLLEGE	There
Jan. 20	BELMONT COLLEGE	There
Jan. 22	AUSTIN PEAY STATE COLLEGE	There
Jan. 27	DAVID LIPSCOMB COLLEGE	Here
Jan. 29	AUSTIN PEAY STATE COLLEGE	Here
Feb. 1	UNION UNIVERSITY	There
Feb. 3	FLORENCE STATE COLLEGE	Here
Feb. 8	UNION UNIVERSITY	Here
Feb. 10	DELTA STATE COLLEGE	There
Feb. 15	LAMBUTH COLLEGE	Here
Feb. 17	DAVID LIPSCOMB COLLEGE	There



